



CRISP AOSA

COMPREHENSIVE REGIONAL INFRASTRUCTURE SUSTAINABILITY PLAN
FOR THE **ATHABASCA OIL SANDS AREA**

Project Overview Presentation

Stakeholder Workshop #1 –
December 10, 2009

**Government
of Alberta** ■

- Background -

- The Radke Report identified many of the immediate infrastructure needs and long-term planning issues in the oil sands areas.
- *Responsible Actions: A Plan for Alberta's Oil Sands*
 - Strategy 2: Promote healthy communities and a quality of life that attracts and retains individuals, families, and businesses
- Several other projects are also underway to assist in implementing Strategy 2:
 - Social and Infrastructure Assessment Model
 - Development of Parsons Creek
 - Municipal Action Plan for Energy Efficiency

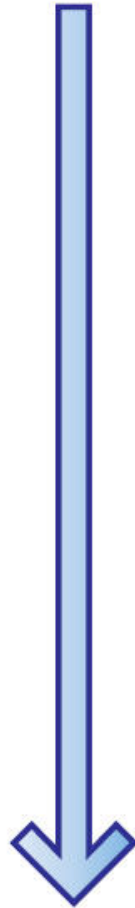
- What does “CRISP” mean?-

- **Comprehensive** - broad range of infrastructure
- **Regional** - across municipal boundaries and in collaboration with a number of regional stakeholders
- **Infrastructure** - very specific scope, different from planning under the *Land Use Framework*
- **Sustainability** - opportunity to develop infrastructure in a new way
- **Plan** - a concrete set of steps that will take us towards our desired future

STRATEGIC

Level of specificity/
detail in planning

TACTICAL



- Land Use Framework
- Provincial Energy Strategy
- Responsible Actions: A Plan for Alberta's Oil Sands
- Lower Athabasca Regional Plan, Lower Peace Regional Plan and others
- CRISP for the AOSA
- Municipal Development Plans
- Functional Planning Studies
- Detailed Engineering

- Purpose -

- The CRISP will establish a long-term roadmap for future infrastructure development in the Athabasca Oil Sands Area based on anticipated production rates and the associated population growth to a maximum level of 6 million barrels per day.

- Objectives -

- CRISP will develop a forward-looking plan to address incremental infrastructure and land release requirements that will have the inherent flexibility to be implemented at a pace that will match economic development.
- CRISP will also outline a framework for monitoring indicators related to further development in the area so that the province is able to respond in a timely way when additional infrastructure is anticipated.

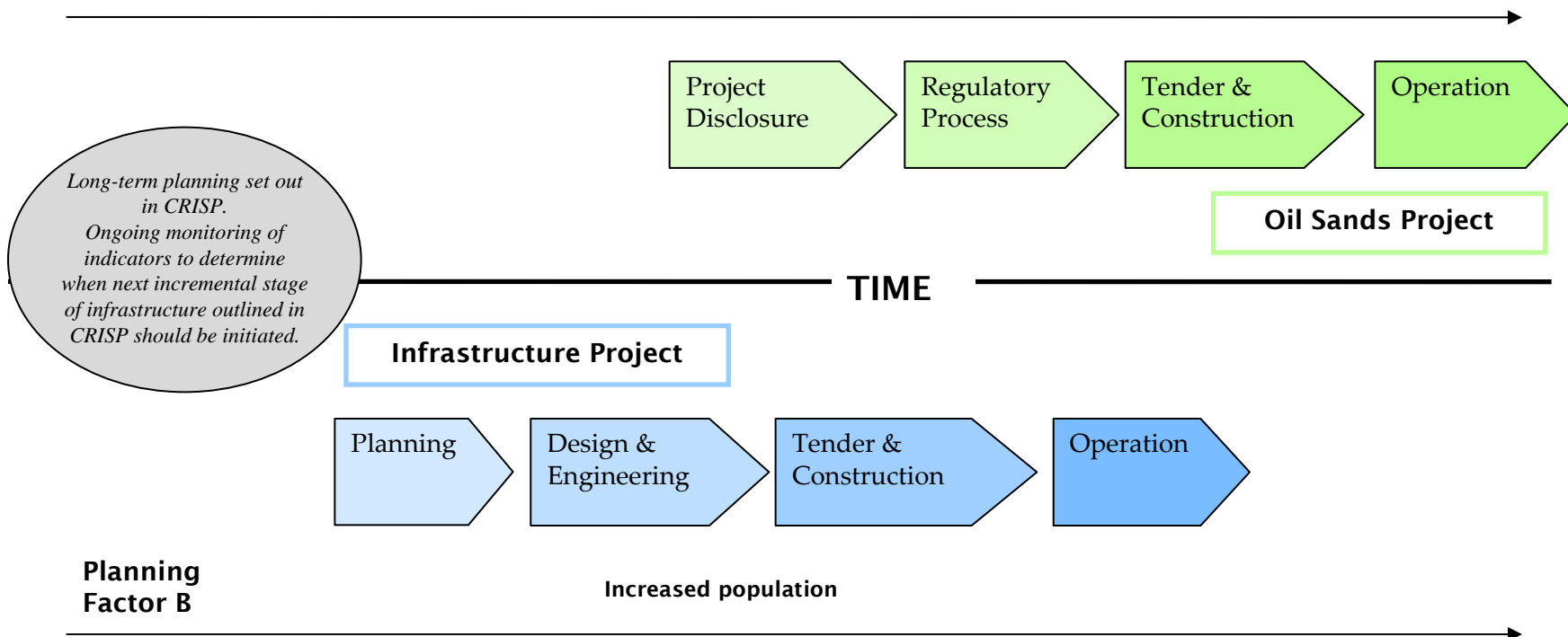
- Objectives -

- Establish a basis for adequate and timely capital funding
- Identify transportation and utility corridor needs for the area
- Foster the development of relationships and collaborative planning between municipalities/communities
- Support the implementation of the *Land-use Framework* and the development of the *Lower Athabasca Regional Plan* and other applicable regional plans
- Provide a tool that could assist future regulatory review of oil sands projects and their socio-economic impacts

How does infrastructure keep pace with oil sands development?

Planning
Factor A

Increased oil sands production



Planning
Factor B

Increased population

- Project Scope -

Geographic Scope – Athabasca OSA including:

- RMWB
- MD of Opportunity No. 17
- Lac La Biche County
- County of Athabasca No. 12
- MD of Lesser Slave River No. 124
- Small portions of Mackenzie County, Northern Sunrise County, Smoky Lake County and the County of St. Paul No. 19
- Also includes 8 First Nation communities and Kikino Métis Settlement

Content Scope – identify areas of urban expansion as well as infrastructure requirements related to the:

- Movement of goods and people
- Transmission and distribution through utilities and pipelines
- Provision of provincial services in communities

- Out of Scope -

- The CRISP will not establish environmental thresholds, such as limits on water use or air emissions, or designate conservation areas.
- The CRISP will not provide the exact location of where the infrastructure may be constructed in the future.
- The CRISP will not determine who will pay for the infrastructure identified in the plan or what the exact cost of constructing everything in the plan will be.
- The CRISP is not bound to a determined timeframe, as such it will not attach dates as to when infrastructure will be constructed.

- Project Stages -

Stage 1: Project Initiation (July - September 2009)

Stage 2: CRISP Development (October 2009 – March 2010)

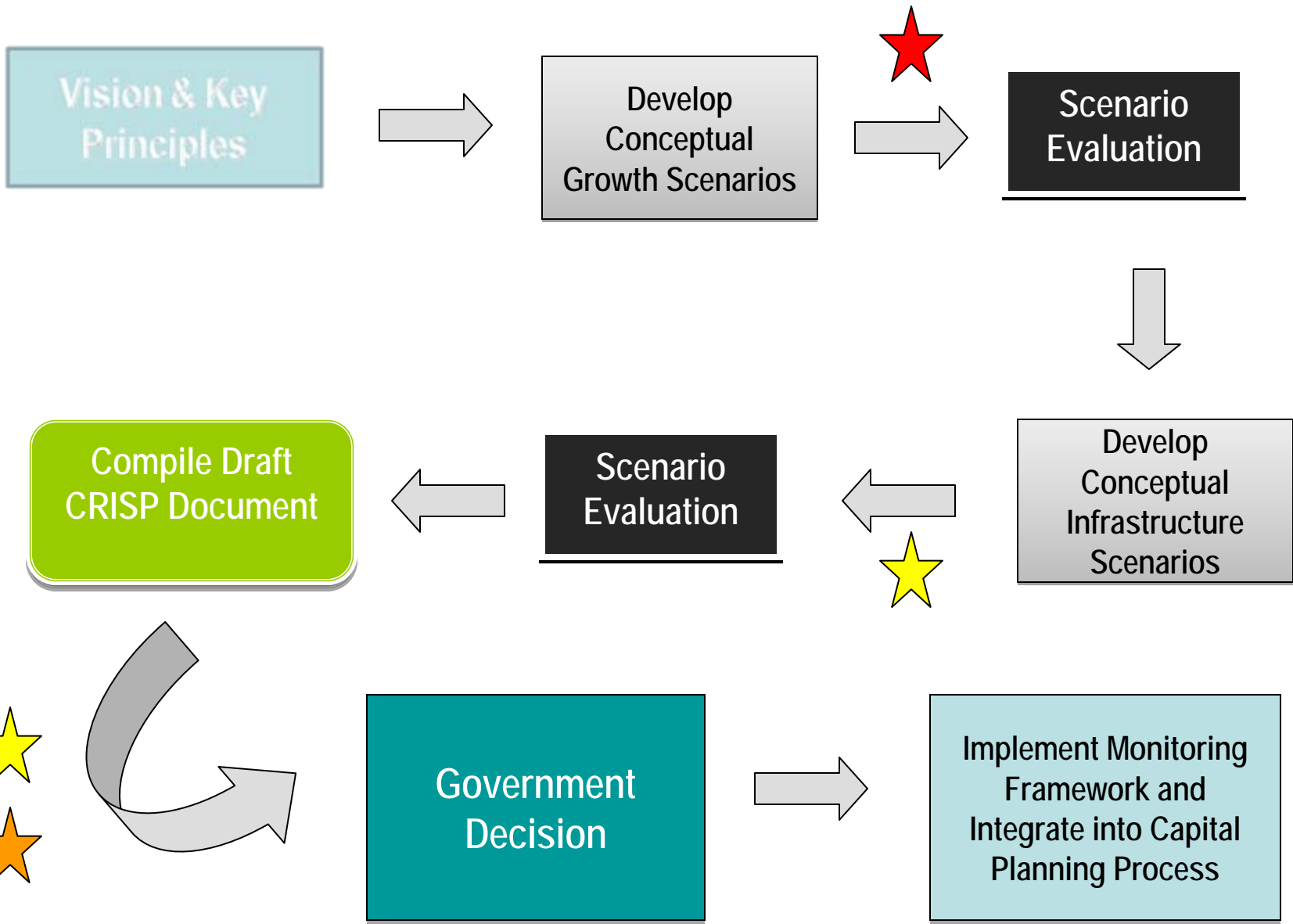
Stage 3: Approval and Implementation (April 2010 – ongoing)

- Internal & External Stakeholders -

Internal Stakeholders	External Stakeholders
<p>Core Planning Team – Government of Alberta Members</p> <ul style="list-style-type: none"> Oil Sands Secretariat, Treasury Board Strategic Capital Planning, Treasury Board Office of Statistics and Information Infrastructure Municipal Affairs Sustainable Resource Development Transportation 	<p>Core Planning Team – External Stakeholder Members</p> <ul style="list-style-type: none"> RMWB MD of Opportunity Lac La Biche County County of Athabasca No. 12 MD of Lesser Slave River No. 124
<p>Other Participating Ministries</p> <ul style="list-style-type: none"> Energy ERCB AUC Land Use Secretariat Environment Finance and Enterprise AEDA NADC Alberta Health Services Education Housing and Urban Affairs, Solicitor General, Seniors and Community Supports as required 	<p>Other External Stakeholders</p> <ul style="list-style-type: none"> Oil Sands developers through Industry Associations Forestry companies and other impacted industries Utility providers Transportation companies and providers Airport authorities School Boards Applicable community organizations and economic development groups Smoky Lake County County of St. Paul No. 19 McKenzie County First Nations Métis Settlements and Métis Nation

- Current Status -

- Planning and Project Management Consultants have been hired
 - ❖ Planning Consultant: planningAlliance with AECOM, Nichols Applied Management and Doug Radke
 - ❖ Project Management Consultant: Sierra Systems
- Project initiated
 - ❖ Project Management Office (PMO) established (Project Lead, Project Manager, and Planning Lead) – weekly meetings occurring
 - ❖ Stakeholder engagement and communication plan being finalized
 - ❖ Ongoing meetings with various ministries and stakeholders to increase knowledge and coordination
- Data Gathering underway
 - ❖ Inventory of existing studies, reports and initiatives underway
 - ❖ Population forecast model, inventories of existing infrastructure and oil sands projects in progress
- Scenario development in progress
 - ❖ Conceptual growth scenarios developed
 - ❖ Stakeholder feedback on vision, principles and conceptual scenarios underway



- Contacts -

**Janelle Wyman, Senior Manager, Oil Sands Secretariat
(Project Lead for CRISP)**

780-644-4542

Janelle.Wyman@gov.ab.ca

**Tom Ross, Executive Director of Infrastructure and Planning,
Oil Sands Secretariat**

780-422-9482

Tom.Ross@gov.ab.ca

**Heather Kennedy, Assistant Deputy Minister,
Oil Sands Secretariat**

780-422-4919

Heather.Kennedy@gov.ab.ca